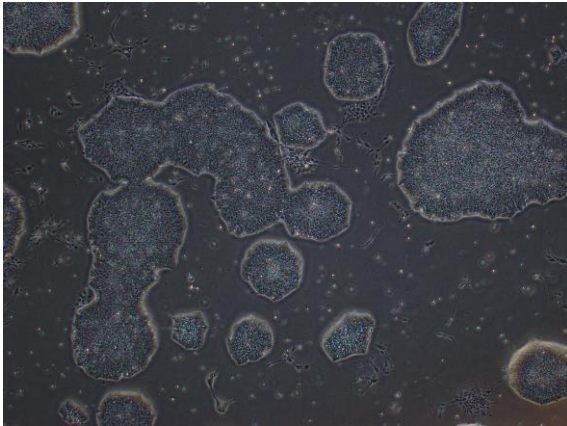
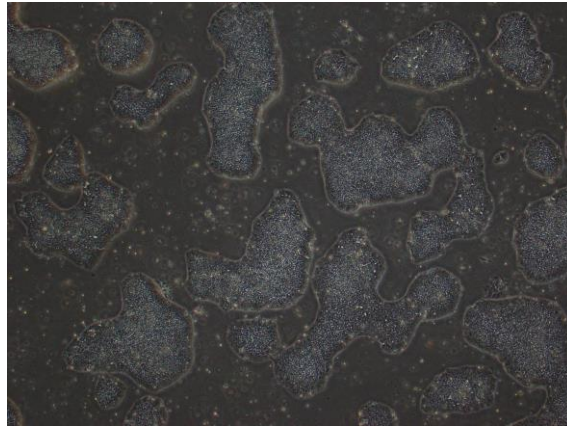


【 CiRA-j-1627 】 Morphology of iPSC colonies

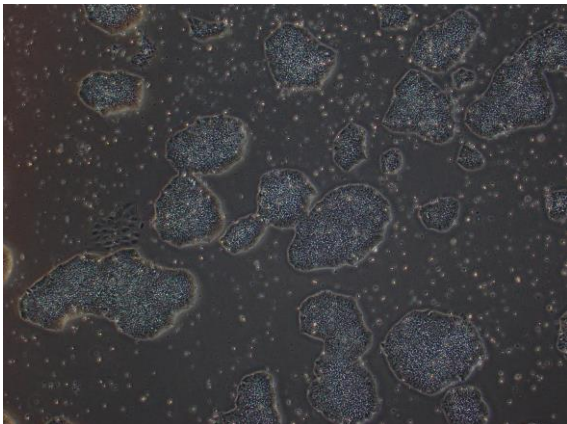
CiRA-j-1627-A: passage-2



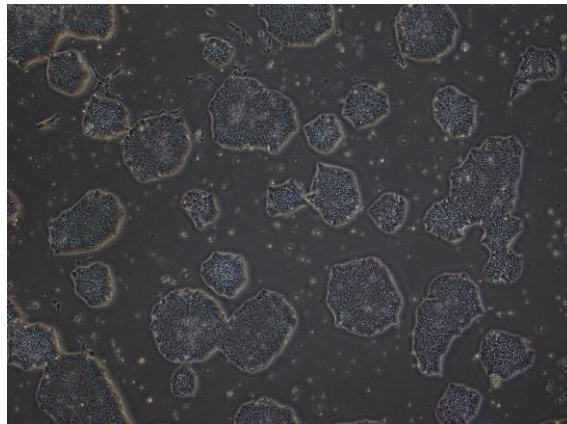
CiRA-j-1627-B: passage-2



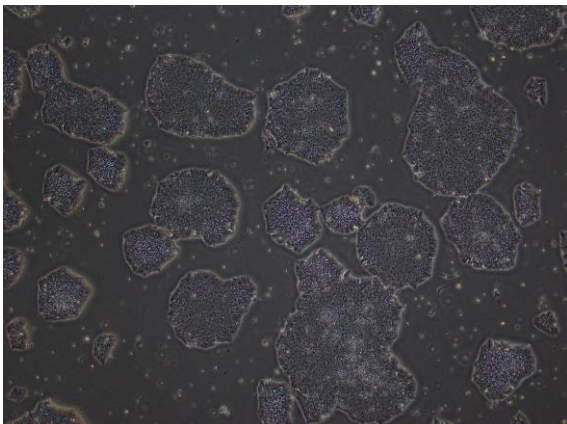
CiRA-j-1627-C: passage-2



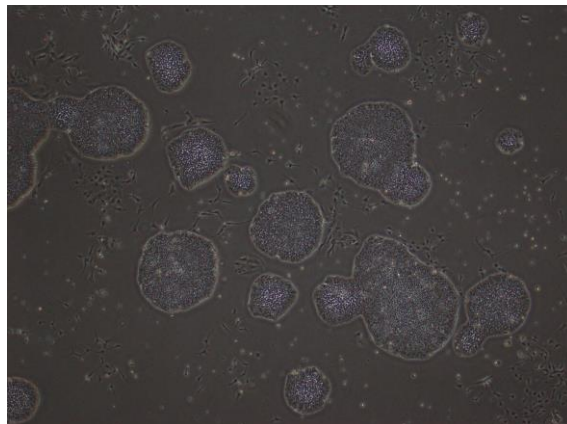
CiRA-j-1627-D: passage-2



CiRA-j-1627-E: passage-2



CiRA-j-1627-F: passage-3



(All images were captured at 4x magnification)